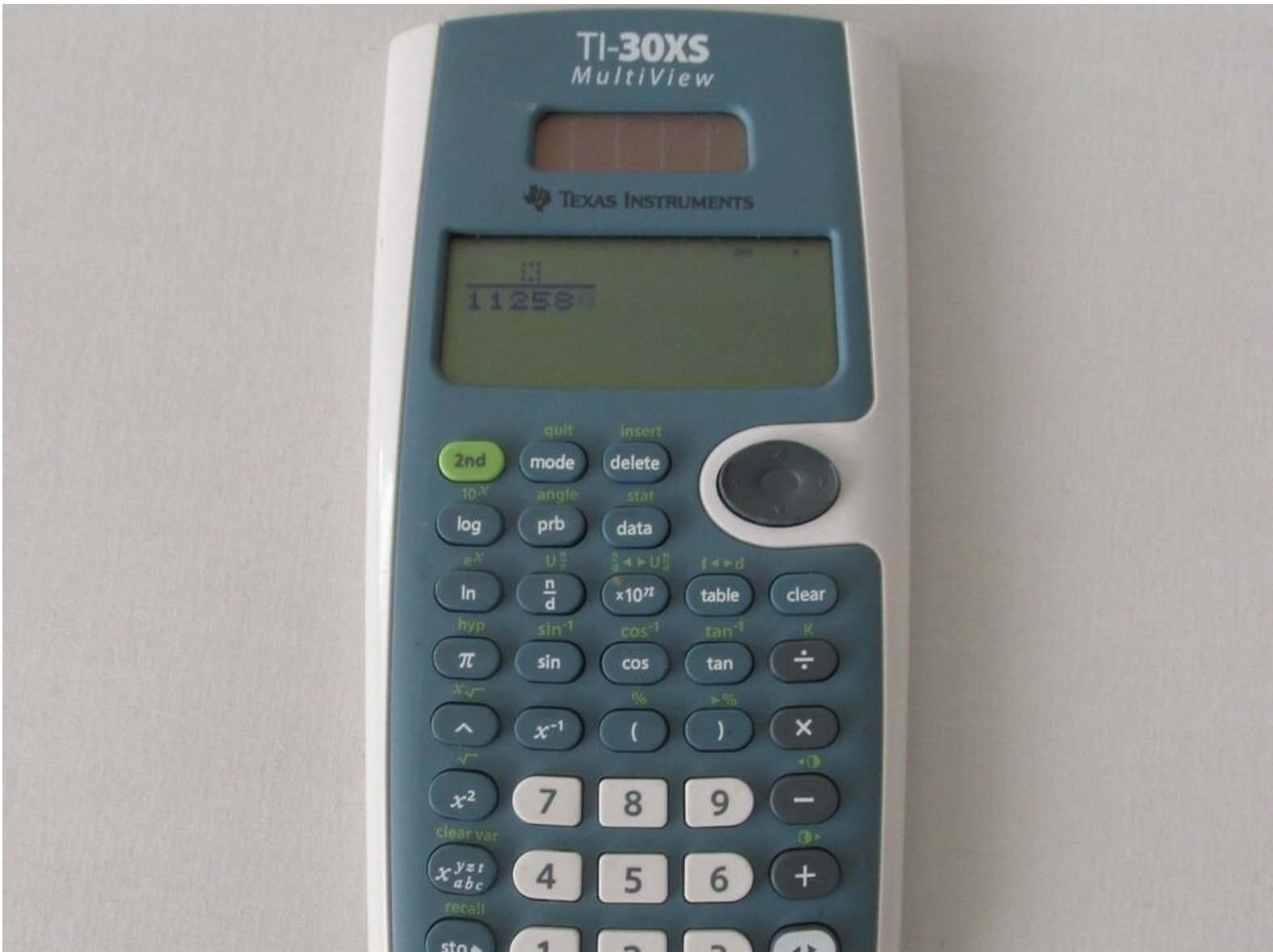




Written By: Regita Soetandar



Page 1 of 4



TOOLS:

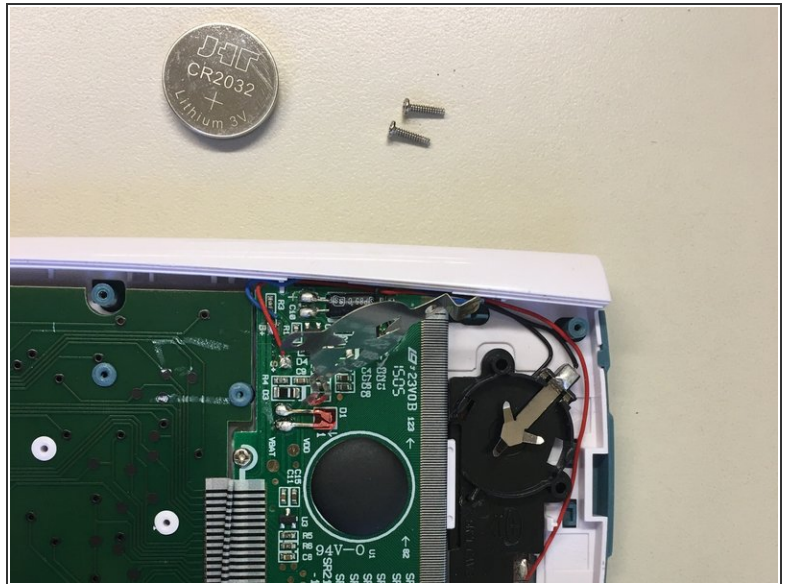
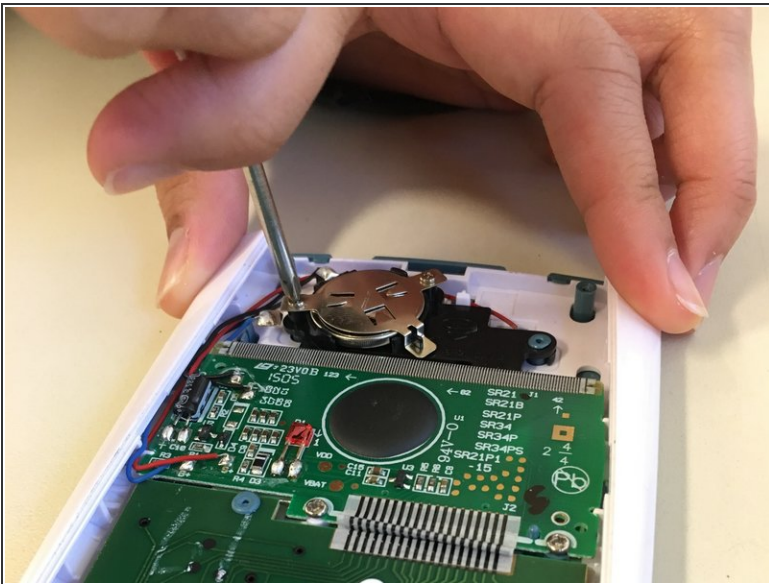
- [Phillips #0 Screwdriver](#) (1)
 - [Flathead Screwdriver](#) (1)
-

Step 1 — Remove the back panel



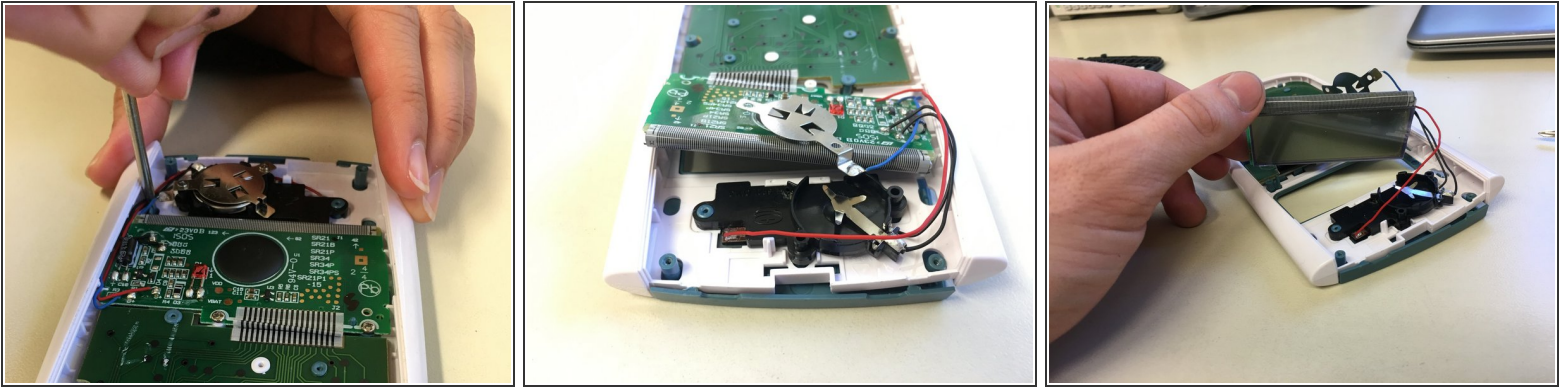
- Using the Phillips head screwdriver, remove the 6 screws
- Pry the back panel open with the flathead

Step 2 — Remove the battery



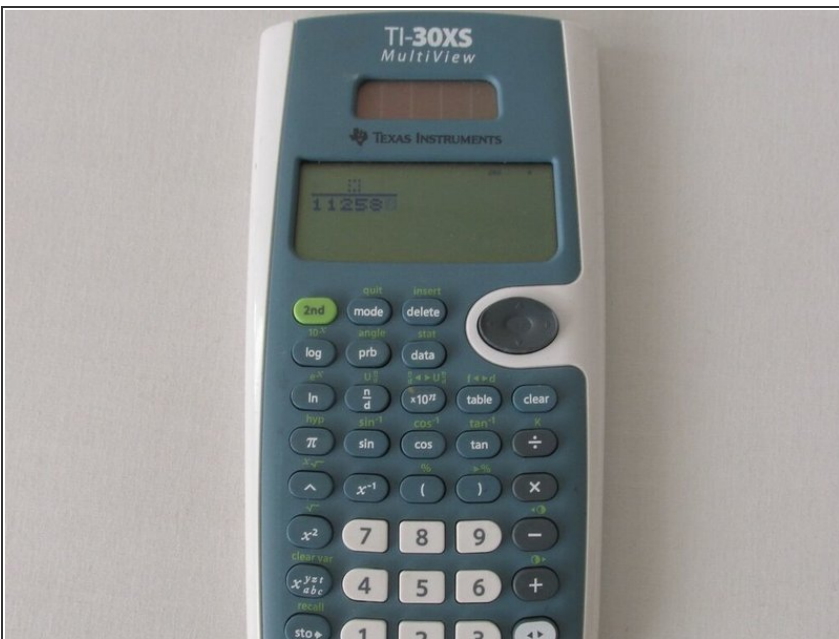
- Remove the two screws holding the battery down
- Take off the metal cover
- Remove the battery

Step 3 — Remove the LCD



- Use the Phillips head screwdriver to remove the two screws securing the LCD to the plastic chassis
- With the flathead, wedge out the LCD screen without disconnecting the internal wiring
- This is the furthest that the calculator can be torn down without destroying the calculator beyond repair

Step 4 — Reassemble the calculator



- Reassemble the calculator, placing the LCD screen, battery, back panel, and screws in the proper position
- After the calculator is reassembled, the calculator truly works as it did before the teardown